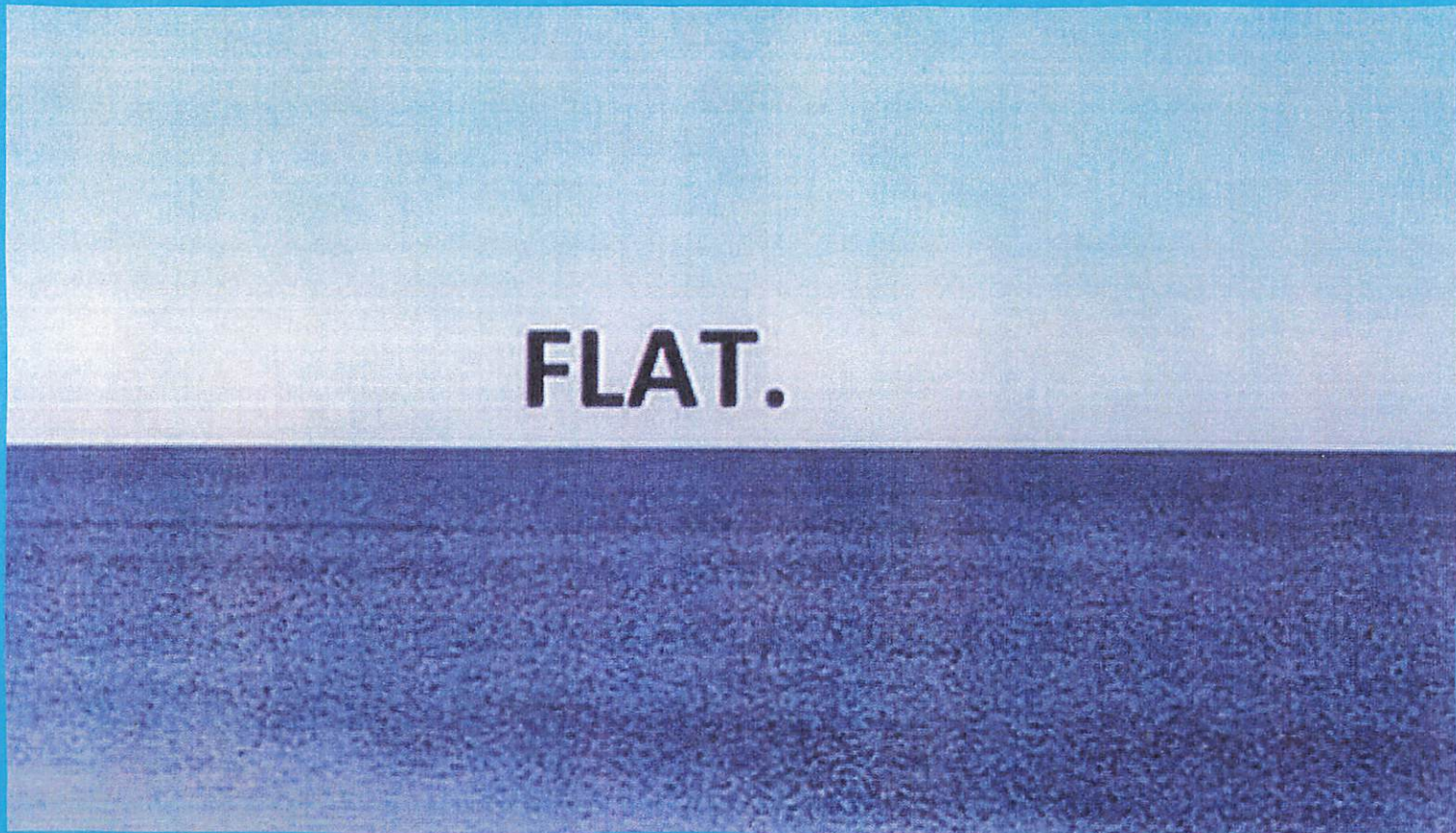
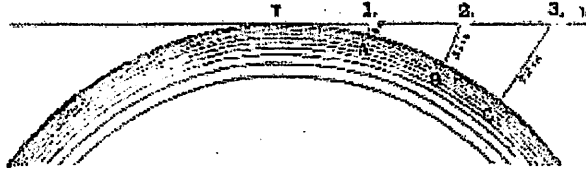


FLAT.

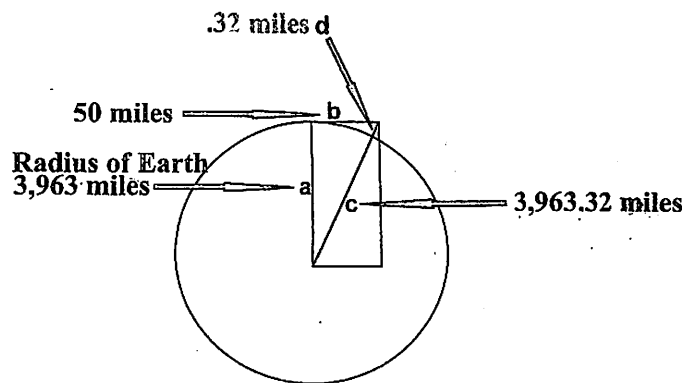


IF the earth is a globe, and is 25,000 English statute miles in circumference, the surface of all standing water must have a certain degree of convexity--every part must be an arc of a circle. From the summit of any such arc there will exist a curvature or declination of 8 inches in the first statute mile. In the second mile the fall will be 32 inches; in the third mile, 72 inches, or 6 feet, as shown in the following diagram:



Let the distance from T to figure 1 represent 1 mile, and the fall from 1 to A, 8 inches; then the fall from 2 to B will be 32 inches, and from 3 to C, 72 inches. In every mile after the first, the curvature downwards from the point T increases as the square of the distance multiplied by 8 inches.

Using the Pythagorean theorem ($a^2+b^2=c^2$) we can easily determine the length of the hypotenuse (side "c"). Side "a" is the radius of the earth (3,963 miles), side "b" is 50 miles, which means that side "c" is 3,963.32 miles. If we subtract the length of the hypotenuse (side "c") from the known radius of the earth, we can confirm that the drop below the horizon at a distance of 50 miles from a supposedly globular earth is .32 miles. That is the exact same figure we obtained using the formula $M^2 \times 8 = D$, thus confirming the validity of that formula.



$$\begin{aligned}
 a^2 + b^2 &= c^2 \\
 \sqrt{a^2 + b^2} &= c \\
 \sqrt{(3,963 \times 3,963) + (50 \times 50)} &= 3,963.32 \\
 c - \text{radius} &= d \\
 3,963.32 - 3,963 &= .32 \text{ miles}
 \end{aligned}$$

Below is a chart that gives the results of the equation ($M^2 \times 8 = D$) for the expected drop per mile assuming an earth with a circumference of 24,901 miles. "M" is the number of miles from the observer at ground level, "8" is the number of inches dropped per mile squared, and "D" is the distance of the drop over the horizon.

Statute Miles	Drop Below Horizon Due to Earth's Supposed Curvature
1	8 inches
2	32 inches
3	6 feet
4	10 feet
5	16 feet
6	24 feet
7	32 feet
8	42 feet
9	54 feet
10	66 feet
20	266 feet
30	600 feet
40	1,066 feet
50	1,666 feet
60	2,400 feet
70	3,266 feet
80	4,266 feet
90	5,400 feet (1.02 miles)
100	6,666 feet (1.26 miles)
120	9,600 feet (1.82 miles)

to gradually decline from the centre C, and to be over 66 feet below the two extremities B, B, as shown in fig. 18. Any vessel approaching from the left would be seen to ascend the inclined plane H, B, C, and on passing the centre would descend from C towards the curvating horizon at H. Such a phenomenon is never observed, and it may be fairly concluded that such convexity or curvature does not exist.

EXPERIMENT 8.

A very striking illustration of the true form of the sea horizon may be observed from the high land in the neighbourhood of the head of Portsmouth Harbour. Looking across Spithead to the Isle of Wight, the base or margin of the island, where water and land come together, appears to be a straight line from east to west, a length of twenty-two statute miles. If a good theodolite is directed upon it, the cross-hair will show that the land and water line is perfectly horizontal, as shown in fig. 19.

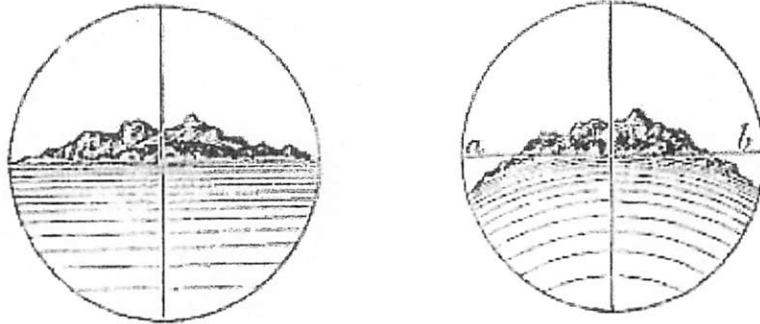
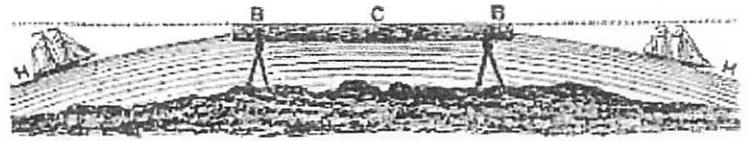


Fig. 19 and Fig. 20

If the earth is globular, the two ends east and west of the Isle of Wight would be 80 feet below the centre, and would appear in the field of view of the theodolite as represented in fig. 20. As a proof that such would be the appearance, the same instrument directed upon any object having an upper outline curved in the smallest degree, will detect and plainly show the curvature in relation to the cross-hair a b; or the levelled board employed in experiment 7, fig. 18, will

prove the same condition to exist; viz., that the margin of the Isle of Wight is, for twenty-two

miles, a perfectly straight line; and instead of curvating downwards 80 feet each way from the centre, as it certainly would if convexity existed, it is absolutely horizontal.

From the lighthouse on Bidstone Hill, near Liverpool, the whole length of the Isle of Man, on a clear day and with a good telescope, is distinctly visible, and presents the same horizontal base line as that observed in the Isle of Wight. From the high land near Douglas harbour, Isle of Man, the whole length of the coast of North Wales is often plainly visible to the naked eye--a distance extending from the point of Ayr, at the mouth of the River Dee, towards Holyhead, not less than fifty miles. Whatever test has been employed, the line, where the sea and the land appear to join, is always found to be perfectly horizontal, as shown in the following diagram; fig. 21. whereas, if the earth is spherical, and therefore the surface of all water convex, such an appearance could not exist. It would of necessity appear as shown in fig. 22.

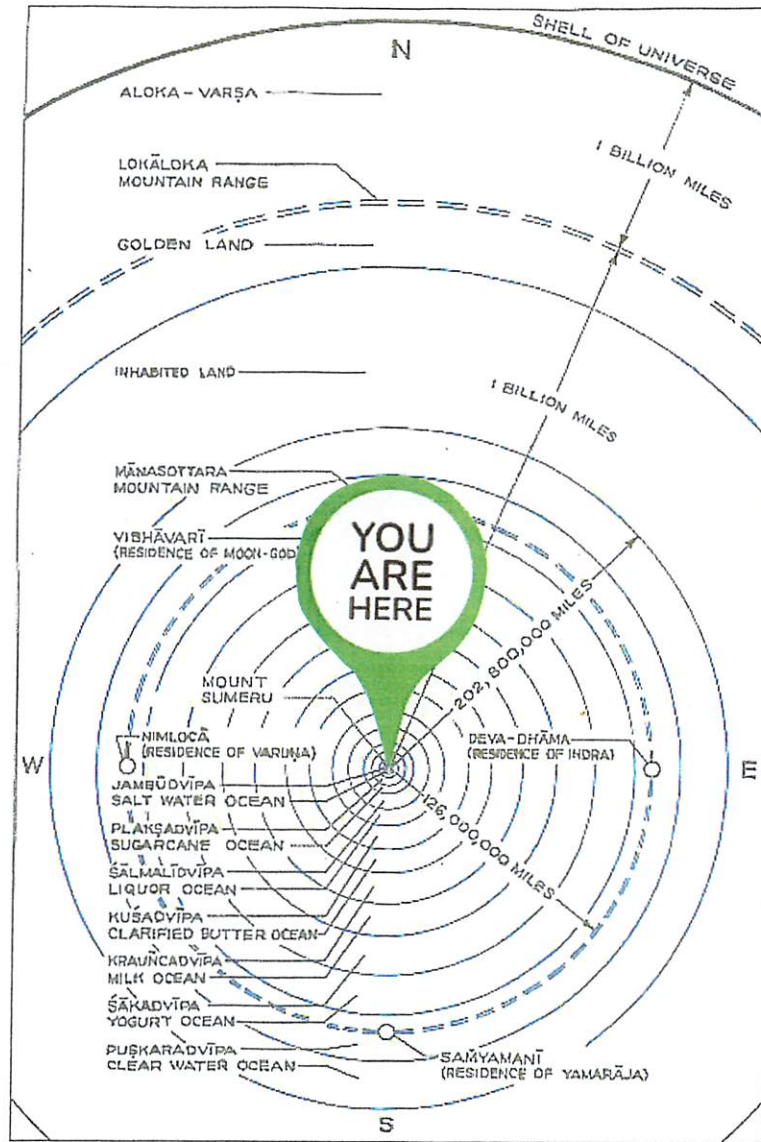


A line stretched horizontally before the observer would not only show the various elevations of the land, but would also show the declination of the horizon H, H, below the cross-line S, S. The fifty miles length of the Welsh coast seen along the horizon in Liverpool Bay, would have a declination from the centre of at least 416 feet (252 x .8 inches = 416 feet 8 inches). But as such declination, or downward curvature, cannot be detected, the conclusion is logically inevitable that it has no existence. Let the reader seriously ask whether any and what rea-

son exists in Nature to prevent the fall of more than 400 feet being visible to the eye, or incapable of detection by any optical or mathematical means whatever. This question is especially important when it is considered that at the same distance, and on the upper outline of the same land, changes of level of only a few yards extent are quickly and unmistakably perceptible.

If he is guided by evidence and reason, and influenced by a love of truth and consistency, he cannot longer maintain that the earth is a globe. He must feel that to do so is to war with the evidence of his senses, to deny that any importance attaches to fact and experiment, to ignore entirely the value of logical process, and to cease to rely upon practical induction.

Bhu-mandala SB Fifth Canto Part Two Chart One



VERSE 4.12.16

ātma-stry-apatya-suhṛdo balam ṛddha-kośam
 antaḥ-puraṁ parivihāra-bhuvaś ca ramyāḥ
 bhū-maṇḍalam jaladhi-mekhalam ākalayya
 kālopaśṛṣṭam iti sa prayayau viśālām

SYNONYMS

ātma — body; **strī** — wives; **apatya** — children; **suhṛdaḥ** — friends; **balam** — influence, army; **ṛddha-kośam** — rich treasury; **antaḥ-puraṁ** — female residential quarters; **parivihāra-bhuvaḥ** — pleasure-grounds; **ca** — and; **ramyāḥ** — beautiful; **bhū-maṇḍalam** — the complete earth; **jala-dhi** — by oceans; **mekhalam** — bound; **ākalayya** — considering; **kāla** — by time; **uparṛṣṭam** — created; **iti** — thus; **saḥ** — he; **prayayau** — went; **viśālām** — to Badarikāśrama.

TRANSLATION

Thus Dhruva Mahārāja, at the end, left his kingdom, which extended all over the earth and was bounded by the great oceans. He considered his



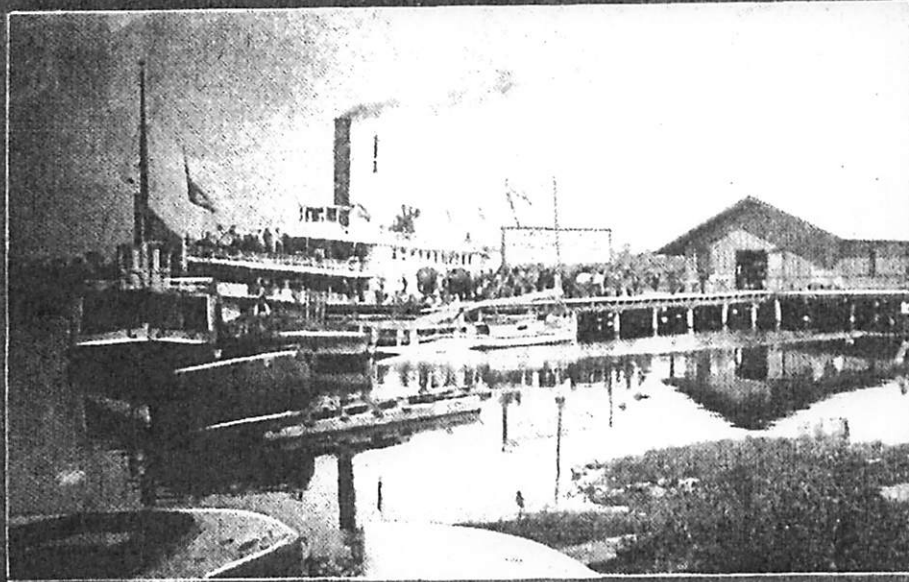
Prabhupada:⁶ You can go further, but you cannot go, that is condition you are restricted. He is thinking, I am free, he is not free.
 Prabhupada: Just as an animal is bound up, so he's going this round or this round, but you cannot go beyond that. (Discussion about *Bhu-mandala*, July 3rd, 1977, Vrndavana)



J. E. Barrington

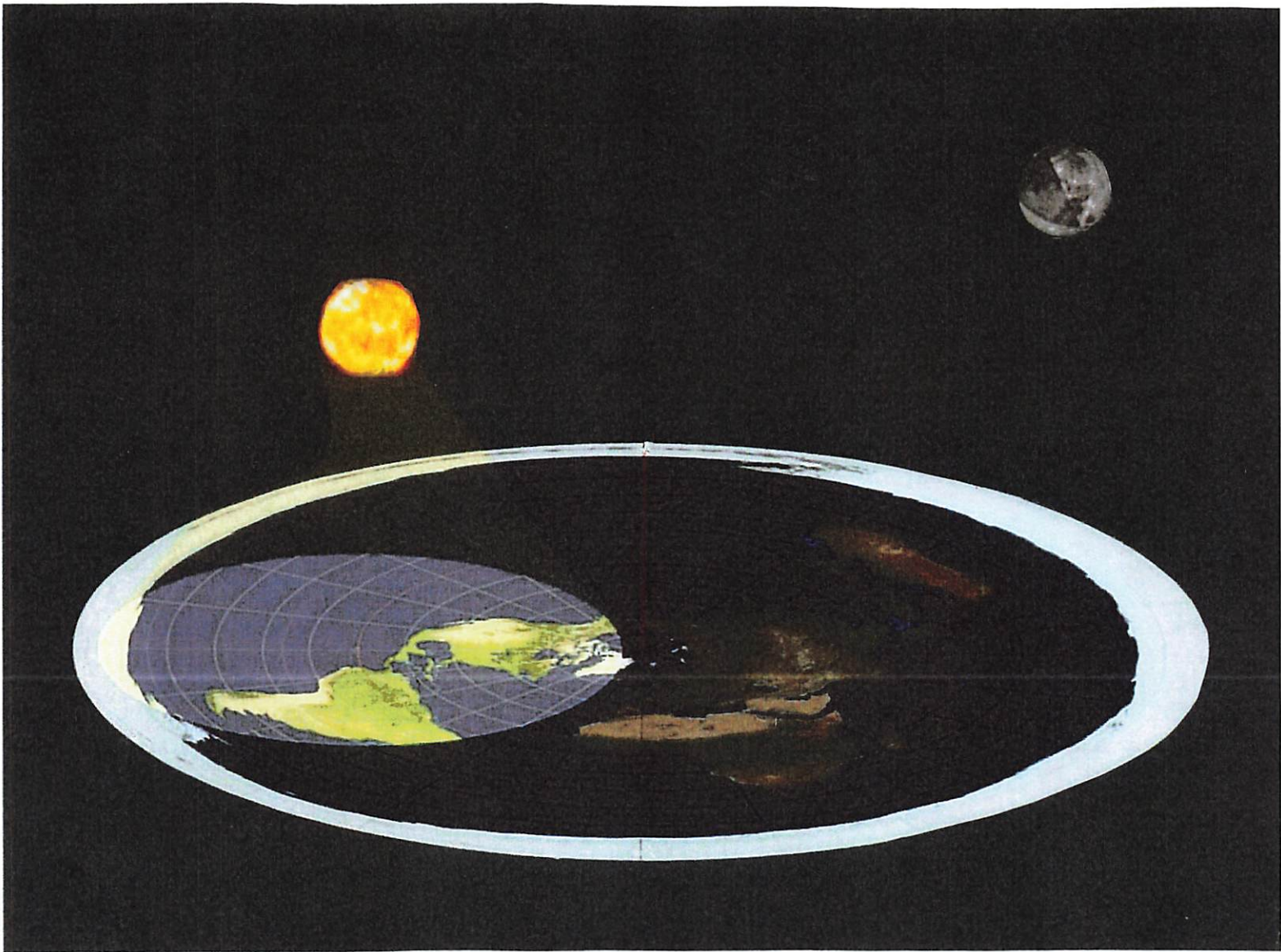


Captain Brent



Captain Brent's ship *Wanderer* as she appeared on her return.
Photographed at Tampa.

“It is unnecessary to say that after my narrative has been accepted, the Zetetic theory of the earth as a plane will have to be recognized and geographies made in conformity there with.” J. E. Barrington^{6,7}



However, day and night can be explained just as easily using a flat Earth concept. The apparent rising and setting of the sun does not imply by any means that the Earth has to be round for day and night to occur. Just as the light of a lighthouse does not expand infinitely into the distance but is limited to a finite circle around itself, similarly the sun spreads its rays to a limited circle of light upon the Earth only lighting portions of the Earth at a time as it circles in its orbit around Mount Meru.

The sun always circles above the Earth and the apparent vision of the rising and setting sun are caused by perspective. As the sun approaches from our horizon line it appears to ascend and when disappearing below the horizon in evening time it appears to descend. In actual fact the sun is always circling at the same distance above the Earth. The appearance of the rising and setting sun is only from our particular perspective.

**Prabhupada: That law of gravity is a bogus theory.
(Conversations: Morning Walk May 19th, 1975 Melbourne)**

This verse from *Brahma-samhita* confirms that even the largest and most powerful planet, the sun, rotates within a fixed orbit, or *kala-cakra*, in obedience to the Supreme Personality of Godhead. This has nothing to do with gravity or any other imaginary laws created by the material scientists.... It is not because of the laws of gravity. Rather, the planets and stars are enabled to float by manipulations of the air. It is due to such manipulations that big, heavy clouds float... (Srimad-Bhagavatam 5.23.3 purport)

Notes

- 2. *Top, Zetetic Astronomy, Earth Not a Globe*, by Samuel Birley Rowbotham (1881) 7. Pythagorean theorem, *The Greatest Lie on Earth: Proof That Our World Is Not a Moving Globe*, by Edward Hendrie (2018) 26-27.**
- 3. *The Greatest Lie on Earth: Proof That Our World Is Not a Moving Globe*, 27-28.**
- 4. *Zetetic Astronomy, Earth Not a Globe*.**
- 6. Prabhupada is founder of the Hare Krishna movement. Image modified, for a similar image go to Google Images, search-beyond the ice walls. To learn the story of J. E. Barrington and William Morris, read-*The Iron Republic*, by Richard Jameson Morgan (1902). To learn about William Morris read-*THE NAVIGATOR WHO CROSSED THE ICE WALLS: WORLDS BEYOND THE ANTARCTICA*, by Claudio Nocelli (2022). This is the story of navigator William Morris, who, after the independence war in the United States, decides to investigate with his new vessel the waters surrounding the Antarctica Circle, finding an unknown passage to an open sea.**
- 7. J.E. Barrington quote is from 2 of *The Iron Republic*. Images are from *The Iron Republic*.**
- 8. Text, SAILING TO JAMBUDVEPA-iskcon-truth.com PDF 92, image, Google Images.**

Compiled by David Wright (Natha dasa), all credit to God.

"It's easier to fool people than to convince them that they have been fooled"-Mark Twain